

**Grammar Lesson 12**

**Questions**

# **Modal Verbs**



# Modal Verbs - Questions

1



a

**The pirates will find the treasure.**

b

**The pirates might find the treasure.**

Which sentence shows **possibility**?

2



a

**The parrots may need to be fed every day.**

b

**The parrots will need to be fed every day.**

Which sentence shows **certainty**?

3



a

**The ship should reach the island by tomorrow.**

b

**The ship will reach the island by tomorrow.**

Which sentence shows **probability**?

4



a

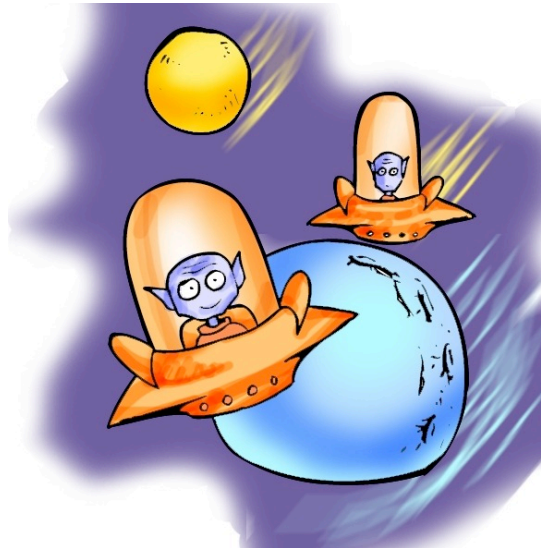
**There must be other pirates  
after the treasure.**

b

**There might be other pirates  
after the treasure.**

Which sentence shows **certainty**?

5



**The aliens may possibly fly home.**

**a** What is the modal **verb**?

**b** What is the modal **adverb**?

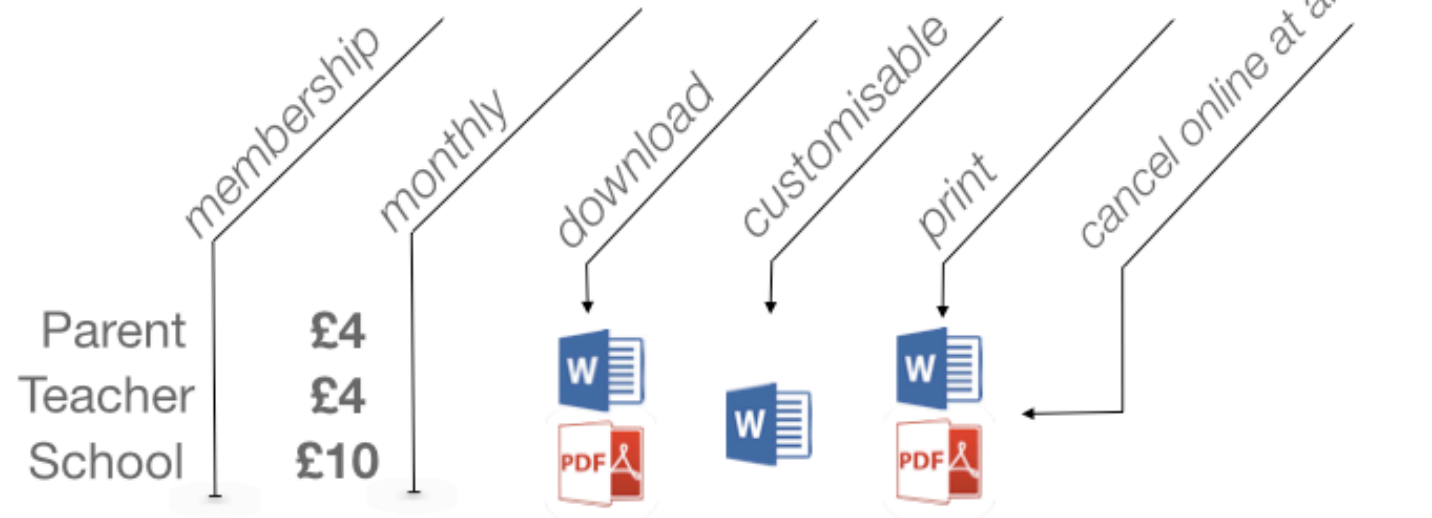
you are at the end of the free sample but don't go away just yet...

“  
From just £4 a month you have  
access to 100's of KS2 lessons...  
”

“...as PDF and  
Word documents”



customisable lessons & copyright free



your resources, your way, join Learn Club today